

Kimberly School District

2024-25 Testing / Curriculum / PD



KSD at a glance

- 1935 students
 - SES: 414
 - KES: 413
 - KMS: 479
 - KHS: 629

A large orange circle is positioned on the left side of the slide, partially cut off by the edge.

Testing &
Academics

IRI

ISAT

Academics

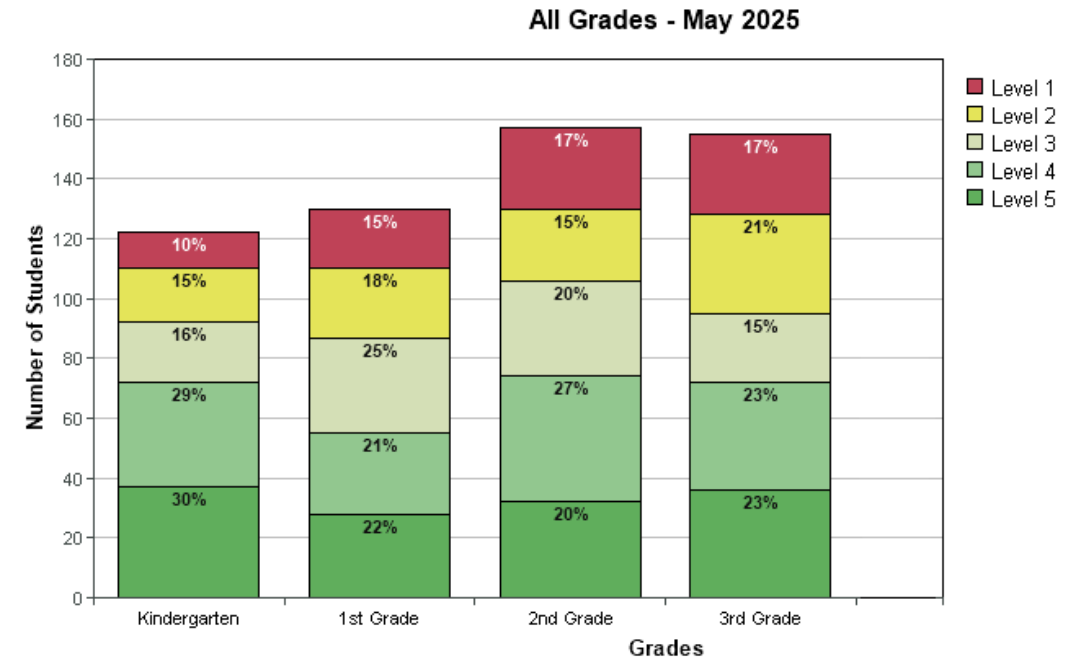
Idaho Reading Indicator - IRI

- Each spring and fall, Idaho students in kindergarten through third grade take the IRI as required by Idaho Code 33-1806
- Istation's Indicators of Progress (ISIP™) Early Reading is a computer-adaptive testing system that provides progress monitoring by assessing and reporting student ability in the critical domains of reading throughout the year.
- 2025-26 school year a change in vendors to Amira Learning

Summary

ISIP™ Early Reading results for [Kimberly School District 414](#)

School Year 2024/2025



KSD (K-3): 68.8% are proficient or above grade level

State: 71% proficient or above

KES: 9.1% growth from Fall to Spring

SES: 14.1% growth from Fall to Spring

ISAT

- Students test who are in grades 3-8 and 11th Grade
 - ELA - grades 3-8 & 11
 - Math - grades 3-8 & 11
 - Science - grades 5, 8, & 11
- 98.6% testing completion rate

ISAT

Percentage of students at or above proficient

ELA

	KSD	State
3rd	47%	48%
4th	58%	50%
5th	61%	54%
6th	51%	52%
7th	44%	56%
8th	48%	54%
11th	47%	59%

Math

	KSD	State
3rd	49%	50%
4th	54%	49%
5th	51%	42%
6th	46%	41%
7th	31%	43%
8th	27%	40%
11th	27%	31%

Science

	KSD	State
5th	46%	44%
8th	37%	42%
11th	33%	39%

SAT

- KHS tests all 11th graders
 - 27% of KHS Juniors met both benchmarks
 - 31% total juniors from the state met both benchmarks

*KHS tests all 11th graders

*7,500 juniors across the state did not take the SAT

Academics

High School

91% of Grades were C or Above

64% of students above 3.0 GPA

92% of students above 2.0 GPA

Middle School

92.5% of Grades were C or Above

Testing/Academic Plan for 2025-26

- Yearly Goal (IPLP) focusing on ISAT improvement
- Interim Blocks
 - Increase the number of interim blocks to provide more practice opportunities
 - Review sessions
- KPI
 - Principals report on the Key Performance Indicators
- Curriculum & Instruction
 - K-5 Math curriculum works well preparing student for ISATs. Students are required to explain their answers, fostering deeper understanding "over-explaining"
 - Providing best curriculum resources to teachers

The image features a large white circle centered on an orange background. The word "Curriculum" is written in bold black text inside the circle. On the left side of the circle, there is a dashed blue arc. On the bottom right side of the circle, there is a solid purple circle.

Curriculum

Curriculum

License expirations

- Wonders – 2028
- Study Sync - 2028
- HMH Math – 2029
- CPM Math – renew licenses each year

Needed curriculum

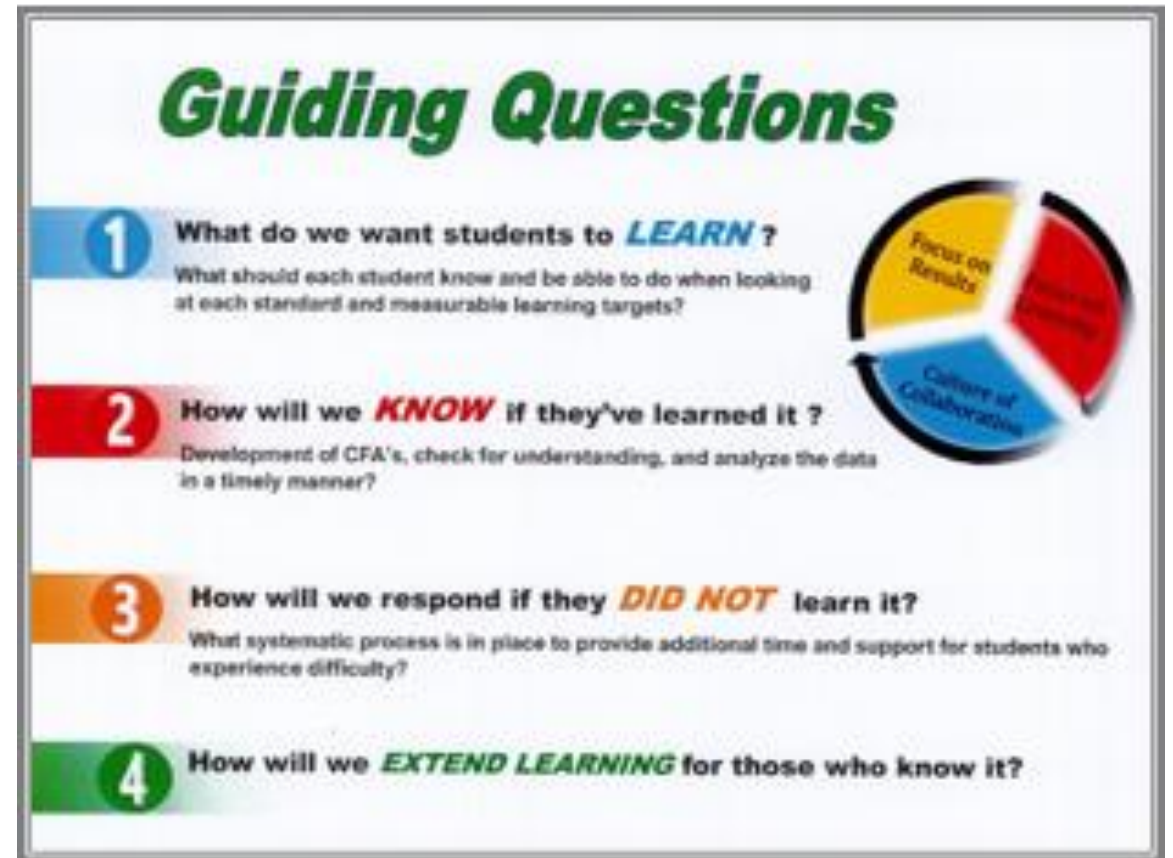
- Science 3-8



Professional Development

PD - IPLP

- This has been positive and well received by staff
- PD is done based on building need, team need, and personal need.
- Teachers need to accumulate at least 22 hours at a minimum



The work continues, and so
does our commitment to
student success!

Kimberly School District